

Step 1: Soak all parts in acetone to remove rubber and blue film

Step 2: Use micro drill bits to clean all holes:

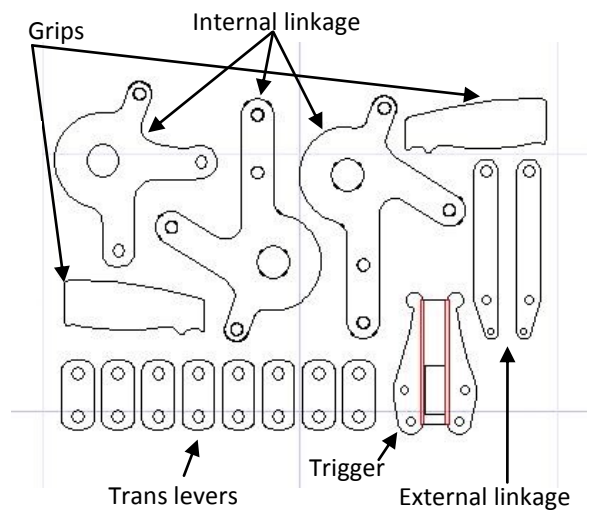
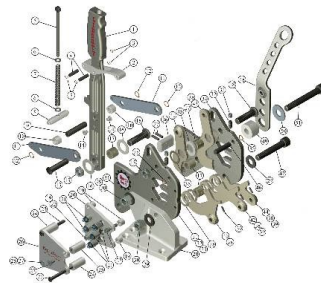
Trigger, trigger pivot, external linkage, internal linkage: .016

Upper housing and lower mounts: .020

Reverse and hand lever pivot holes and housing brackets: .032

Step 3: Place main hand lever half on drill bit or pivot bolt to aid alignment. Etched detail must face out. Use superglue to attach lever halves together; manually align grip end of lever before pressing halves together; clean hole as needed to remove superglue. **Do NOT glue grips on lever!**

Step 4 Remove separator between main housing halves.



Insert (1) large pivot bolt through reverse lever, driver side of main housing, hand lever and other side of main housing. Glue (or bolt) pivot fastener in place.

Sandwich (3) internal linkage pieces within the main housing. Two internal linkage pieces fit outboard of the third.

Use (2) small rivets to attach external links to main lever and internal linkage.

Use two medium size rivets to hold internal linkage within housing at upper and lower forward mounting hole.

The trigger should be fitted over the top of the hand lever, then fold the sides down. Install rivet where trigger pivots on lever.

Attach grips to each side of hand lever.

