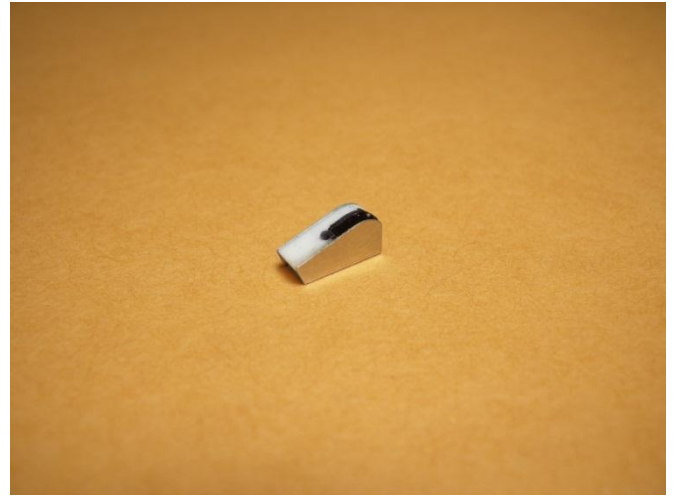


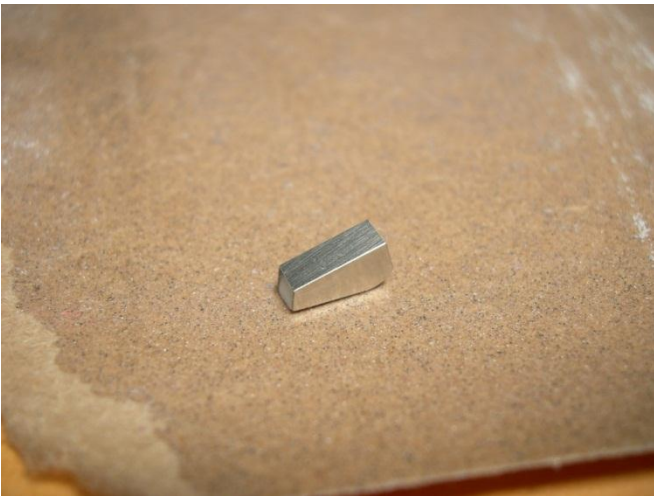
## B&M Pro Stick Console Assembly



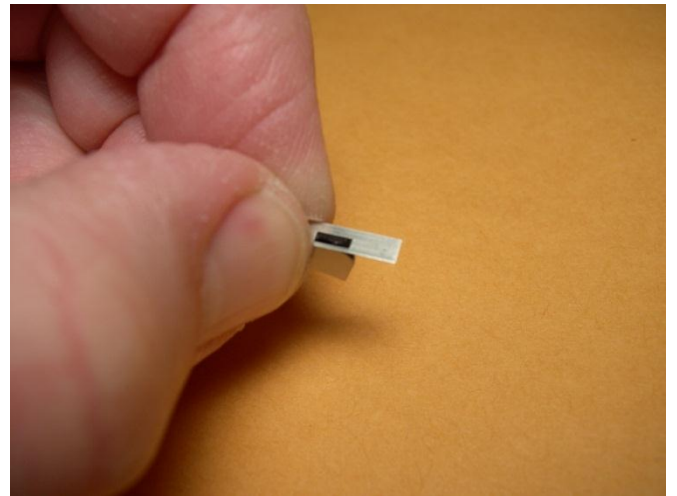
After soaking PE parts in acetone, fold console body at etch lines, and clean up resin insert ...



Paint or otherwise detail recess where lever will insert, and glue rear edge flush with rear of console while seating firmly in on base.



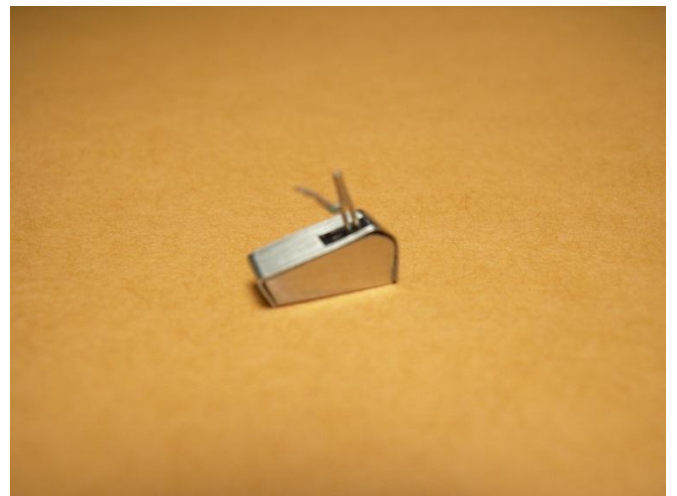
Surface top edge of resin insert so it is flush with top of console.



Locate and glue console cover to top of resin insert, making sure that outside edges are flush with outside edges of console body.



Console cover shown glued to console body.



After wrapping edges of cover around front and rear ends and gluing to insert, trim or sand off any overlapping cover material. Install ball on top of lever.